



澳太机械制造有限公司
AOTAI MACHINE MANUFACTURING CO.,LTD.

Copyright©2021 Aotai Machine Manufacturing Co.,Ltd



OD MOUNTED BEVELING & FACING

外卡式管端坡口机平口机

Aotai Machine Manufacturing Co.,ltd.
Add:No.4238,Binhai Third Avenue,Binhai Industry
Area,Wenzhou,325025,China.
Tel:0086-577-86830918 / 86808798
Fax:0086-577-86821773
Web: www.zjaotai.com, www.zjaotai.cn
E-mail: sales@wzaotai.com

澳太机械制造有限公司
地址: 中国.温州经济技术开发区滨海园区十路三道4238号
电话: 0086-577-86829982 / 86817214
传真: 0577- 86821773
网址: www.zjaotai.com, www.zjaotai.cn
邮箱: sales@wzaotai.com



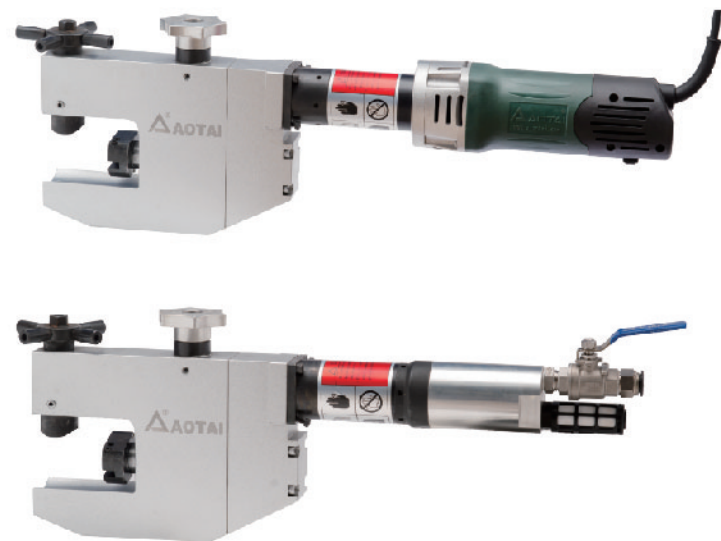
C-I NARROW DESIGN PIPE BEVEING MACHINE

C-I 型-外卡式管子端面坡口机

产品简介 / Overview

C-I 型外卡式管端坡口机，针对狭窄工作间，小管径管道端面坡口加工而设计。采用外卡式定位安装，不同规格涨紧块适配不同管径，定心更精确，装夹更稳固，其结构更紧凑，操作简单，广泛应用于水冷壁、锅炉鳍片、省煤器、过热器、再热器、电厂等行业中，单管和排管的坡口机加工。

C-I narrow design pipe beveling machine was designed for the end beveling of narrow working site and small diameter pipe. OD mounted on the pipe, one clamping block just fit one size pipe, secured clamping, easy to operate. It was widely used in water wall, fins, boiler economizer, superheater, preheater, power plants and other industries, the single pipe and exhaust pipe facing and beveling



产品特点 / Features

- 1、加工管径范围广
- 2、铝合金机身，适宜高空作业
- 3、管外壁定位安装，自动定心，手动进刀
- 4、可选配专用刀具可加工内螺纹管道
- 5、电动和气动两种驱动方式可选

- Cold cutting, without influence the material of the pipe
- OD mounted, self-centering, secured clamping, easy to operate
- Aluminum body is light, suitable for working aloft.
- 5 models, working range: 8-108mm
- Optional special tool bit use for pipe inner thread
- Driven motor: Pneumatic and Electric

技术参数 / Specification

| 规格型号 Model | | 加工范围 Range | 坡口壁厚 Thickness | 进刀行程 Rotating | 刀盘转速 Tool stroke | 最小管长 Pipe length |
|-------------|--------------|------------|----------------|---------------|------------------|------------------|
| 电动 Electric | 气动 Pneumatic | OD mm | mm | mm | rpm | mm |
| ISC-53 | TSC-53 | Φ8~53 | ≤8 | 11 | 0-58 | ≥60 |
| ISC-63 | TSC-63 | Φ20~63 | ≤12 | 11 | 0-55 | ≥70 |
| ISC-73 | TSC-73 | Φ25~73 | ≤12 | 11 | 0-54 | ≥70 |
| ISC-83 | TSC-83 | Φ30~83 | ≤12 | 11 | 0-43 | ≥70 |
| ISC-108 | TSC-108 | Φ50~108 | ≤12 | 11 | 0-42 | ≥70 |

相关技术参数仅供参考，不作为最终交货标准 Above parameters just for reference only, not acceptance criteria

涨紧夹头 / Clamping Block

| 型号 Model | 1 | 2 | 3 | 4 | 5 | 6 | 7 | 8 | 9 | 10 | 11 | 12 | 13 | 14 | 15 | 16 | 17 |
|----------|-------|-----|-------|-----|-----|-------|-----|-------|-----|-----|-----|-----|------|-------|-----|-----|-----|
| ISC-53 | Φ8 | Φ10 | Φ12 | Φ14 | Φ16 | Φ18 | Φ20 | Φ22 | Φ25 | Φ28 | Φ32 | Φ38 | Φ42 | Φ44.5 | Φ48 | Φ51 | Φ53 |
| ISC-63 | Φ20 | Φ22 | Φ25.4 | Φ28 | Φ32 | Φ38 | Φ42 | Φ44.5 | Φ48 | Φ51 | Φ54 | Φ57 | Φ60 | Φ63 | | | |
| ISC-73 | Φ25.4 | Φ28 | Φ32 | Φ38 | Φ42 | Φ44.5 | Φ48 | Φ51 | Φ57 | Φ60 | Φ63 | Φ68 | Φ70 | Φ73 | | | |
| ISC-83 | Φ25.4 | Φ28 | Φ32 | Φ38 | Φ42 | Φ44.5 | Φ48 | Φ51 | Φ57 | Φ60 | Φ63 | Φ68 | Φ70 | Φ73 | Φ76 | Φ83 | |
| ISC-108 | Φ50 | Φ54 | Φ57 | Φ60 | Φ63 | Φ68 | Φ70 | Φ73 | Φ76 | Φ83 | Φ89 | Φ95 | Φ108 | | | | |

一种规格涨紧夹头适配唯一管径，随机标配四种规格涨紧夹头，如需更多规格，购买前请声明

One clamping block just fit one size pipe

Standard with four diameter clamping block, more specifications please inquire

动力参数 / Power Supplies

1、电动式:

能源供应方便，性能稳定，应用广泛

电源要求: 220V 1PH 50/60HZ

功率: 1.43KW

Electric:

Convenient power supply Stable Performance Popular choice

Electric requirement: 220V 1PH 50/60HZ

Power: 1.43KW

2、气动式:

安全防爆，性能稳定，便于维护

气源要求: 1500-2000L/min@0.63-0.8MPa

功率: 2HP

Pneumatic:

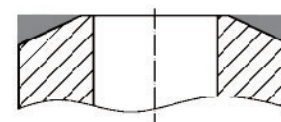
Explosion Proof Stable Performance Easy to maintenance

Air requirement: 500-2000L/min @0.63-0.8MPa

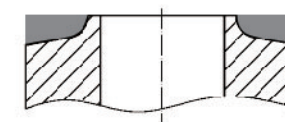
Power: 2HP



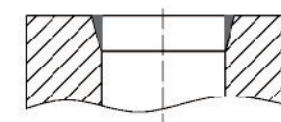
坡口类型 / Beveling Shape



V型坡口
V-type



U型坡口
U-type



内坡口
Inside bevel

加工刀具 / Tooling

坡口角度: 0°, 30°, 37°, 15° Bevel angle: 0°, 30°, 37°, 15°

如需加工其他角度坡口，订购前请申明，并请告知管道材质!

other beveling shape, angle and pipe material, please declare before order.

1、一体式刀具

一体式设计，可通过磨刀，循环使用;

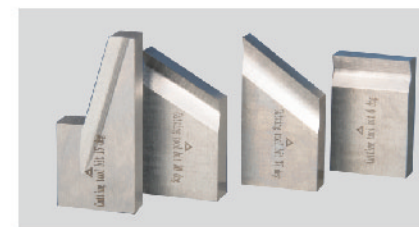
材质: M42和 M35

Form tool

can be reused by grinding

Material: M42和M35

Standard supply



2、嵌入式刀具

一种规格刀片，不同角度的刀托，无须磨刀，更高性价比

刀托材质: 40Cr 刀片材质: 金属陶瓷或硬质合金

Insert tool

Insert same, different angle holder

HolderMaterial: HSS;

Insert material: Cermet or Carbide

Optional



C-II AUTO FEED PIPE BEVELING MACHINE

C-II型-外卡式管端自动坡口机

产品简介 / Overview

C-II型外卡式管端自动坡口机，针对狭窄工作间，小管径管道端面坡口加工而设计。采用外卡式定位安装，不同规格涨紧块适配不同管径，定心更精确，装夹更稳固，其结构更紧凑，更轻便，自动进刀，操作更简便，是C型管子端面坡口机的增强型，广泛应用于水冷壁、锅炉鳍片、省煤器、过热器、再热器等行业中，单管和排管的坡口机加工。

C-II Auto feed pipe facing machine was designed for the end beveling of narrow working site and small diameter pipe. OD mounted on the pipe, one clamping block just fit one size pipe, secured clamping automatic feeding, easy to operate. It was widely used in water wall, fins, boiler economizer, superheater, reheater, power plants and other industries, the single pipe and exhaust pipe facing and beveling



产品特点 / Features

- 1、加工管径范围广
- 2、铝合金机身，适宜高空作业
- 3、机械式自动进退刀，无需手动调节
- 4、可选配专用刀具可加工内螺纹管道
- 5、外卡式定位安装，自动定心，使用更方便
- 6、德国进口麦太保调速电机驱动，动力强，噪音小，耐用性高

- Cold cutting, without influence the material of the pipe
- OD mounted, self centering, secured clamping, easy to operate
- Aluminum body is light, suitable for working aloft.
- 5 models, working range: 8-108mm
- Optional special tool bit use for pipe inner thread
- Driven motor: Pneumatic and Electric

技术参数 / Specification

| 规格型号 Model | 加工范围 Range | 坡口壁厚 Thickness | 刀盘转速 Tool stroke | 进刀行程 Rotating | 机体厚度 Body thickness |
|------------|------------|----------------|------------------|---------------|---------------------|
| | OD mm | mm | rpm | mm | mm |
| ISC-53-II | φ14-53 | ≤12 | 0-58 | 0-20 | 54 |
| ISC-76-II | φ25-76 | ≤12 | 0-54 | 0-20 | 58 |

相关技术参数仅供参考，不作为最终交货标准 Above parameters just for reference only, not acceptance criteria

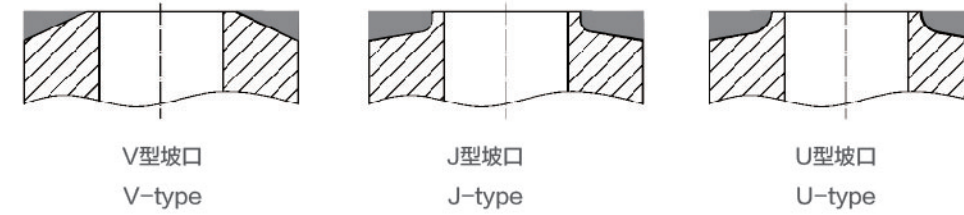
涨紧夹头 / Clamping Block

| 型号 Model | 1 | 2 | 3 | 4 | 5 | 6 | 7 | 8 | 9 | 10 | 11 | 12 | 13 | 14 | 15 |
|----------|-------|-----|-----|-----|-----|-------|-----|-----|-----|-----|-----|-----|-----|-----|-----|
| ISC-53-2 | φ14 | φ16 | φ18 | φ20 | φ22 | φ25.4 | φ28 | φ32 | φ38 | φ42 | φ45 | φ48 | φ51 | φ53 | |
| ISC-76-2 | φ25.4 | φ28 | φ32 | φ38 | φ42 | φ45 | φ51 | φ54 | φ57 | φ60 | φ63 | φ68 | φ70 | φ73 | φ76 |

一种规格涨紧夹头适配唯一管径，随机标配四种规格涨紧夹头，如需更多规格，购买前请声明

One clamping block just fit one size pipe
Standard with four diameter clamping block, more specifications please inquire

坡口类型 / Beveling Shape



动力参数 / Power Supplies

调速电机
电源要求: 220V 1PH 50/60HZ
功率: 1.3KW
Electric requirement: 220V 1PH 50/60HZ
Power: 1.3KW

加工刀具 / Tooling

坡口角度 Bevel angle: 0°, 30°, 37°, 15°

如需加工其他角度坡口，订购前请申明，并请告知管道材质！

other beveling shape, angle and pipe material, please declare before order.

1、一体式刀具

一体式设计，可通过磨刀，循环使用

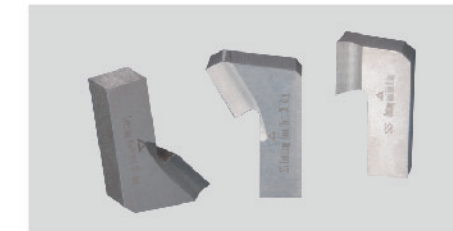
材质: M42和 M35

Forming tool

can be reused by grinding

Material: M42和M35

Standard supply



2、分体焊接式刀具 (选配)

硬质合金焊接刀具更耐用

刀托材质: 40Cr

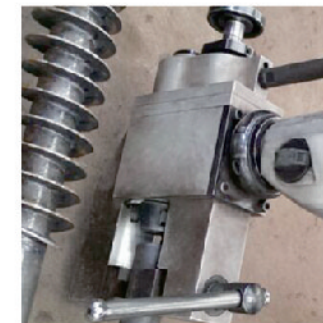
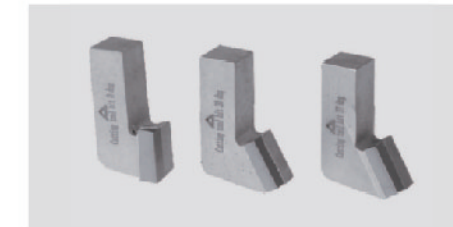
刀片材质: 硬质合金

Insert tool

Insert same, different angle holder

Holder material: 40Cr

Insert material: Cermet or Carbide



PFM PIPE FACING MACHINE

PFM 管端平口机

产品简介 / Overview

PFM系列管端平口机，主要针对小直径薄壁钢管的管端快速平口而设计。采用外卡夹紧定位安装，配备专用夹具和刀具，安装方便，加工快速高效。其体积小，重量轻，携带方便。适用于电子，制药，食品，饮料，太阳能，半导体以及化学行业的管端的平口和坡口加工。

PFM pipe facing machine was designed for pipe end facing and beveling with small diameter and thin-wall thickness. OD mounted, equipped with special collect and tool, easy installation, fast and efficient processing. It is small in size, light in weight and easy to carry. It is suitable for facing and beveling of pipe end in electronics, pharmaceutical, food, beverage, solar energy, semiconductor and chemical industry.



产品特点 / Features

- 1、切削量可微调，手动进刀，加工精度高
 - 2、满足于高纯净要求的薄壁管端平口和坡口加工
 - 3、平口加工，端面无毛刺，与轴线100%垂直
 - 4、刀片和夹具安装快捷，加工一道平口只需几秒钟
 - 5、2种型号，加工范围：管外径3mm-110mm
 - 6、不同直径规格的管子，选配不同规格的夹具
 - 7、电源选择：电池式和有线电机式
 - 8、整机小巧轻便，移动便捷，适应多种工位和工况下使用
 - 9、可用于碳钢、不锈钢、合金钢，铝合金管子
- Auto feeding, high precision
 - One collect clamp one size pipe
 - Driven by electric motor or battery
 - Cleaning cutting, no water and oil
 - 2 models, working range for pipe OD 3mm-110mm
 - Pipe end absolute vertical, no deformation, no burrs, perfect weld-prep
 - Fast install, fast cutting, one facing only need a few seconds
 - Can be used for alloy steel, carbon steel, stainless steel and aluminum

技术参数 / Specification

| 参数 Item | 型号 Model | PFM-1.0 | PFM-1.0A | PFM-4.0A |
|-----------------------|----------|-------------|-------------------|-------------------|
| 电源方式 Drive | | 电池式 Battery | 电机 Electric motor | 电机 Electric motor |
| 管外径范围 Range | | φ3-25.4mm | φ3-25.4mm | φ12.7-110mm |
| 进刀行程 Tool stroke | | 5mm | 5mm | 5mm |
| 加工壁厚 thickness | | 0.5-3mm | 0.5-3mm | 0.5-5mm |
| 空载转速 No-load rotating | | 300rpm | 300rpm | 300rpm |
| 额定电压 Voltage | | 14.4v | 220v | 220v |
| 功率 Power | | - | 1.3kw | 1.3kw |
| 净重 Net Weight | | 2.3kg | 4.8kg | 19kg |

标配四种直径规格涨紧块，如需更多规格，购买前请声明 相关技术参数仅供参考，不作为最终交货标准
Standard with four diameter clamping block, more specifications please inquire

标配刀具 / Tooling

三片平口刀
材质：硬质合金或金属陶瓷

2pcs facing tool
Material: Cermet or Carbide
Beveling tool optional

